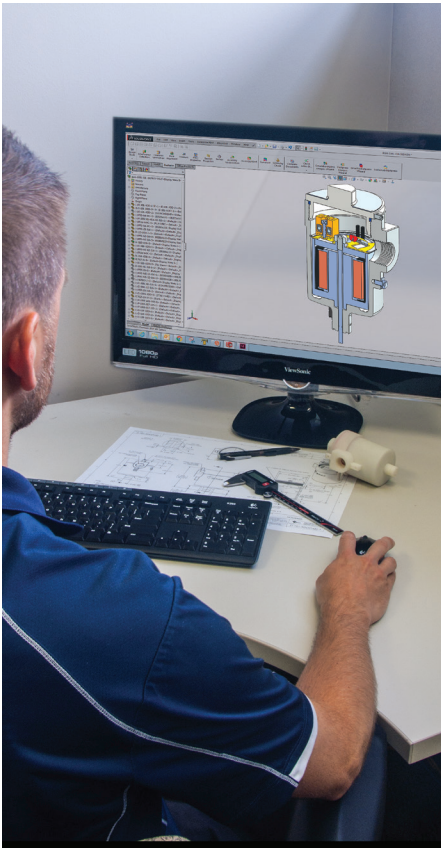


www.versa-valves.com  
e-mail: sales@versa-valves.com





## QUALITY IS ABSOLUTE

Quality has no degrees at Versa. There is no such thing as “pretty good” or “almost right”. Every product is designed and manufactured to conform to uniformly high standards.

These standards are assured by a quality management system which includes ISO 9001 certification and testing of all products prior to shipment.



No matter how tough the application or environmental demands, Versa offers you a choice of valves to meet the challenge. Advanced design, durable construction materials and rigid manufacturing standards provide valves you can rely on for years of trouble-free performance.

Be it a single valve or a pneumatic system, Versa’s commitment to quality is uncompromising. Count on it.

## WORLDWIDE ACCESSIBILITY

More than 1000 fluid power representatives and over 100 stocking locations comprise Versa’s worldwide distribution system. They are supported by manufacturing and technical centers in the United States and The Netherlands.

The distributor network is the key to customer service and the source of continuous application feedback. Versa uses this input as part of its research and development program in an effort to respond to individual and industry needs.

Versa makes certain that our distributors’ sales and service personnel receive factory training on an ongoing basis. This includes basic theory, product indoctrination and seminars.

Our distributor family is a source of pride to Versa—but more important—it is a source of support and service to all of our customers.

Contact Versa for the distributor servicing your specific area.

## THE COMMITMENT CONTINUES

Fluid Power is our business. It is our only business, so we have to be good at it. Since its beginning in 1949, Versa has maintained its commitment to quality products and satisfied customers.

Versa has succeeded in serving industry’s needs with a broad line of directional control devices. Our focus on product variety, technical expertise and company support remains constant. It all begins with a responsiveness to industry needs and ends with delivery of the valve or system you need—when you need it.

We view ourselves as problem solvers and that role requires more than making good products. It is what we do before and after that is equally important. From drawing board to user satisfaction, our commitment is continuous.

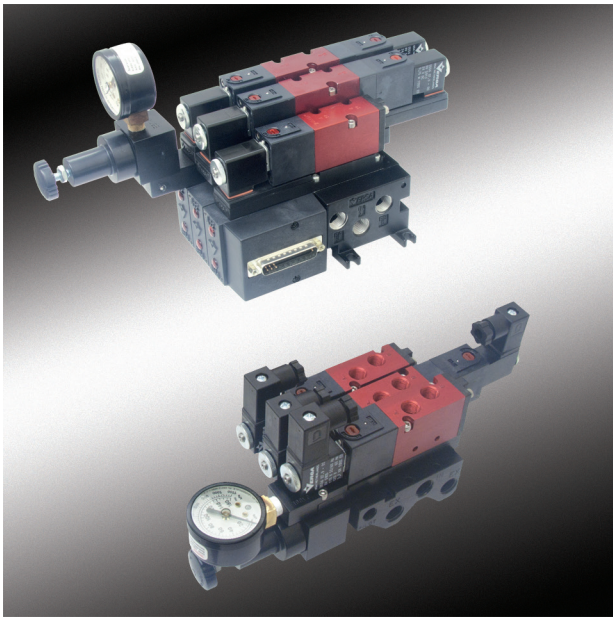
## HOW WE PUT IT TOGETHER IS WHAT SETS US APART

Versa is not the biggest manufacturer of directional control valves, so we try to be the best.

Design, manufacture, quality control, pricing, delivery - whatever the function - it must be geared to customer needs.

Many companies sell valves. At Versa we sell satisfaction.





## C5 SERIES VALVES

**Design:** Packed balance spool

**Construction:** Anodized Aluminum body, FKM (Fluorocarbon) sealing

**Service:** Pneumatic-vacuum to 115 psi (8 bar)

**Function:** 3 and 4-Way, multipurpose, 3/2, 5/2 or 5/3

**Port Sizes:** 1/8" NPT or G1/8

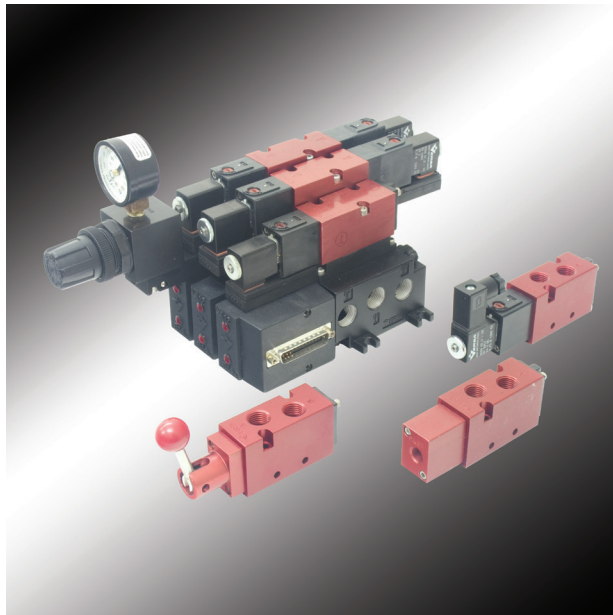
**Orifice:** 0.197" (5mm)      **Flow:** Cv 0.75

**Style:** Side-ported, rack mounting or manifold mounted

**Actuation:** Solenoid pilot, remote pilot or manual



Bulletin C



## C7 SERIES VALVES

**Design:** Packed balance spool

**Construction:** Anodized Aluminum body, FKM (Fluorocarbon) sealing

**Service:** Pneumatic-vacuum to 115 psi (8 bar)

**Function:** 3 and 4-Way, multipurpose, 3/2, 5/2 or 5/3

**Port Sizes:** 1/4" NPT or G1/4

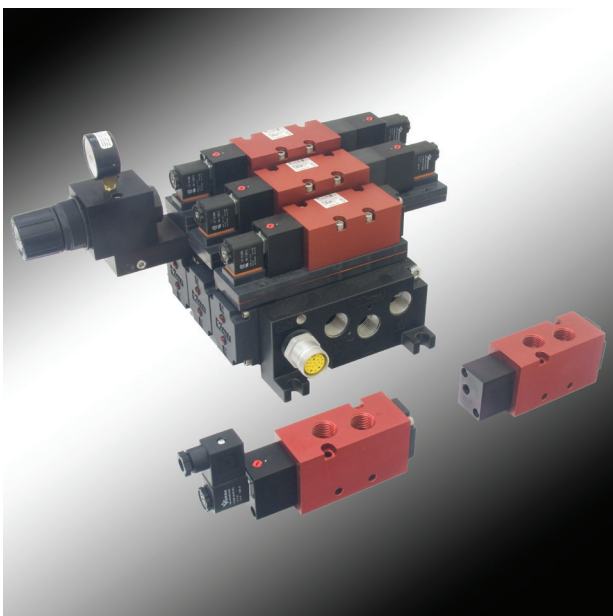
**Orifice:** 0.276" (7mm)      **Flow:** Cv 1.6

**Style:** Side-ported, rack mounting or manifold mounted

**Actuation:** Solenoid pilot, remote pilot or manual



Bulletin C



## C9 SERIES VALVES

**Design:** Packed balance spool

**Construction:** Anodized Aluminum body, FKM (Fluorocarbon) sealing

**Service:** Pneumatic-vacuum to 150 psi (10.3 bar)

**Function:** 3 and 4-Way, multipurpose, 3/2, 5/2 or 5/3

**Port Sizes:** 1/2" NPT or G1/2

**Orifice:** 0.354" (9mm)      **Flow:** Cv 4.1

**Style:** Side-ported or manifold mounted

**Actuation:** Solenoid pilot or remote pilot



Bulletin C



# SERIES E TYPE VALVES EZ VALVES



**Design:** Direct acting poppet

**Construction:** Anodized Aluminum, Buna or FKM (Fluorocarbon) sealing

**Service:** Pneumatic-vacuum to 500 psi (35 bar)  
Hydraulic to 500 psi (35 bar)

**Function:** Two-Way, Three-Way, multipurpose, 2/2 or 3/2

**Port Sizes:** 1/8" NPT

**Orifice:** 0.031" to 0.125" (0.8 to 3.2mm)

**Flow:** Cv 0.022 to 0.26

**Style:** Side-ported or manifold mounted

**Actuation:** Solenoid



Bulletin: E



## E4/E5 VALVES

**Design:** Direct acting poppet

**Construction:** Stainless Steel body, Buna or FKM (Fluorocarbon) sealing

**Service:** Pneumatic-vacuum to 500 psi (35 bar)  
Hydraulic to 500 psi (35 bar)

**Function:** Two-Way, Three-Way, multipurpose, 2/2 or 3/2

**Port Sizes:** 1/8" & 1/4" NPT

**Orifice:** 0.031" to 0.125" (0.8 to 3.2mm)

**Flow:** Cv 0.022 to 0.26

**Style:** Side-ported

**Actuation:** Solenoid



Bulletin: E



## E VALVES

**Design:** Direct acting poppet

**Construction:** Anodized Aluminum or Stainless Steel body, Buna or FKM (Fluorocarbon) sealing

**Service:** Pneumatic-vacuum to 500 psi (35 bar)  
Hydraulic to 500 psi (35 bar)

**Function:** Two-Way, Three-Way, multipurpose, 2/2 or 3/2

**Port Sizes:** 1/8" or 1/4" NPT

**Orifice:** 0.047" to 0.25" (1.2 to 6.4mm)

**Flow:** Cv 0.06 to 0.79

**Style:** Side-ported or manifold mounted

**Actuation:** Solenoid



Bulletin: E





## SERIES D VALVES

**Design:** Direct Acting

**Construction:** Stainless Steel body, FKM (Fluorocarbon) sealing

**Service:** Pneumatic, Air/Inert gas and Hydraulic, vac to 175 psi (vac to 12 bar)

**Function:** Two-Way, Three-Way, multipurpose, 2/2 or 3/2

**Port Sizes:** 1/4" NPT

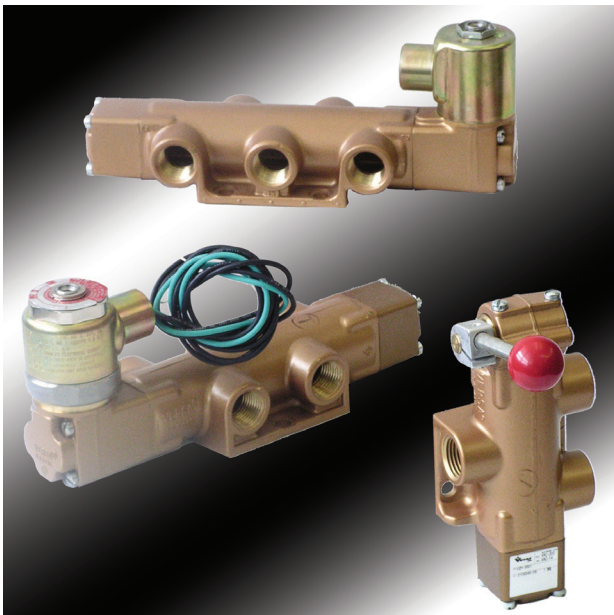
**Flow:** Cv 0.8

**Style:** Side-ported and NAMUR mount

**Actuation:** Solenoid, spring return



Bulletin: D-316



## SERIES V, and T VALVES

**Design:** Packed balance spool

**Construction:** V Series-Forged Brass body, Buna or FKM (Fluorocarbon) sealing  
T Series-Forged Brass body, Teflon (TFE) sealing

**Service:** V Series-Pneumatic-vacuum to 200 psi (14 bar)

T Series-Hydraulic to 500 psi (35 bar)

**Function:** Two-Way, Three-Way, Four-Way, multipurpose, 2/2, 3/2, 3/3, 5/2 or 5/3

**Port Sizes:**

1/8" NPT or G1/8 0.375" (9,5mm) Cv 1.4

1/4" NPT or G1/4 0.375" (9,5mm) Cv 1.8

3/8" NPT or G3/8 0.625" (16mm) Cv 3.4

1/2" NPT or G1/2 0.625" (16mm) Cv 4.0

3/4" NPT or G3/4 1.063" (27mm) Cv 9.7

1" NPT or G1 1.063" (27mm) Cv 11.1

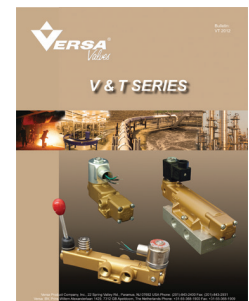
1 1/4" NPT or G1 1/4 1.25" (32mm) Cv 14.9

**Orifice:**

**Flow:**

**Style:** Side-ported or manifold mounted

**Actuation:** Solenoid pilot, remote pilot, manual or mechanical



Bulletin: VT



## SERIES B VALVES

**Design:** Packed spool

**Construction:** Brass body, Stainless plunger, Buna or FKM (Fluorocarbon) sealing

**Service:** Pneumatic-vacuum to 200 psi (14 bar)

Hydraulic to 500 psi (35 bar)

**Function:** Two-Way, Three-Way, 2/2 or 3/2

**Port Sizes:**

1/8" NPT 0.188" (4.7mm) Cv 0.6

**Orifice:**

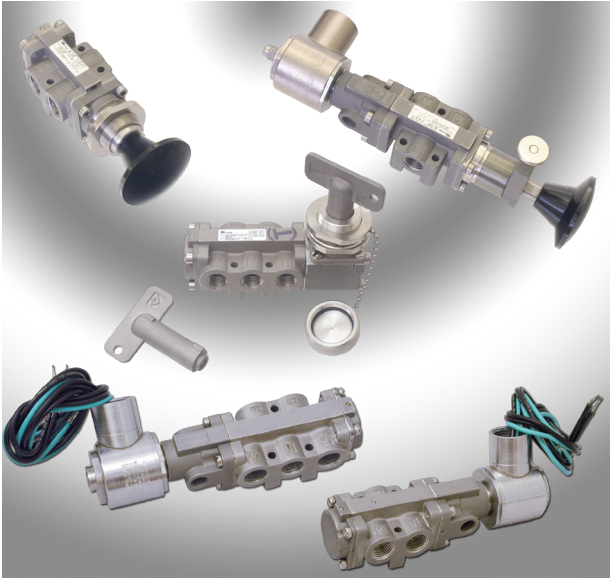
**Flow:**

**Style:** Side-ported or manifold mounted

**Actuation:** Manual, mechanical or remote pilot



Bulletin: B



## SERIES C-316 VALVES

**Design:** Packed balance spool

**Construction:** Stainless Steel body, FKM (Fluorocarbon) sealing

**Service:** Pneumatic-vacuum to 150 psi (10 bar)

**Function:** Three-Way, Four-Way, multipurpose, 3/2 or 5/2

**Port Sizes:** 1/4" NPT or G1/4

**Orifice:** 0.32" (8.1mm)

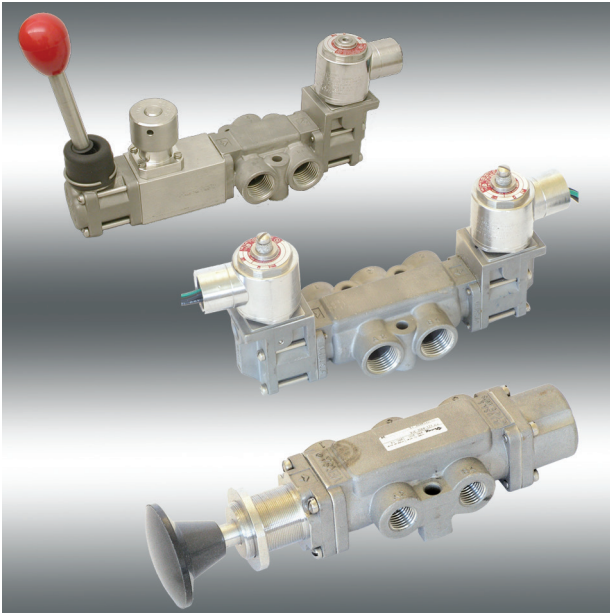
**Flow:** Cv 2.0

**Style:** Side-ported

**Actuation:** Solenoid pilot,  
remote pilot,  
manual or  
mechanical



Bulletin: C316



## SERIES V-316 VALVES

**Design:** Packed balance spool

**Construction:** Stainless Steel body,  
FKM (Fluorocarbon) sealing

**Service:** Pneumatic-vacuum to 200 psi (14 bar)  
Hydraulic to 400 psi (35 bar)

**Function:** Three-Way, Four-Way,  
multipurpose, 3/2, 3/3, 5/2 or 5/3

Port Sizes:	Orifice :	Flow:
1/4" NPT	0.375" (9.5mm)	Cv 1.4
3/8" NPT	0.375" (9.5mm)	Cv 1.8
1/2" NPT	0.625" (16mm)	Cv 5.5
1" NPT	1.063" (27mm)	Cv 11.1

**Style:** Side-ported

**Actuation:** Solenoid pilot, remote pilot  
and manual



Bulletin: V316



## Modular Air Package CMAP VMAP

**Design:** Modular actuator control system with integral Filter, Regulator and Valve modules. Optional speed controls and check valves also available.

**Construction:** Stainless Steel body, FKM (Fluorocarbon) sealing

**Service:** Pneumatic- to 175 psi (12 bar)  
Three-Way, Four-Way, multipurpose, 3/2, 3/3, 5/2  
or 5/3

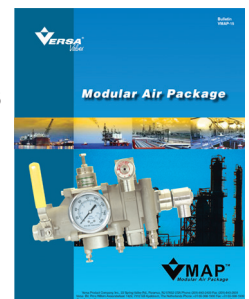
Port Sizes:	Function:	Flow:
CMAP 1/4" NPT	Three-Way	Cv 1.5
VMAP 1/4" or 1/2" NPT	Three-Way, Four-Way	Cv 1.9 to 4.8

**Style:** Side-ported, Versa exclusive manifold  
system for custom circuitry.

**Actuation:** Solenoid pilot, remote pilot or manual.

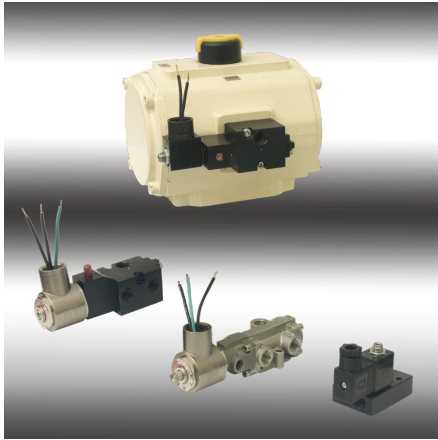


Bulletin: C316



Bulletin: VMAP





# NAMUR VALVES

## For Direct Mounting to Actuators

**Construction:** E5 Anodized Aluminum  
 C5 Anodized Aluminum  
 C-316 Stainless Steel  
 FKM (Fluorocarbon) sealing

**Service:** Pneumatic to 150 psi (10.3 bar)

**Function:** Three-Way, Four-Way, 3/2, 3/3, 5/2 or 5/3

Series:	Orifice:	Flow:
E5:	0.031" (3.2mm)	Cv 0.08
C5:	0.197" (5mm)	Cv 0.75
C-316:	0.30" (7.6mm)	Cv 1.6

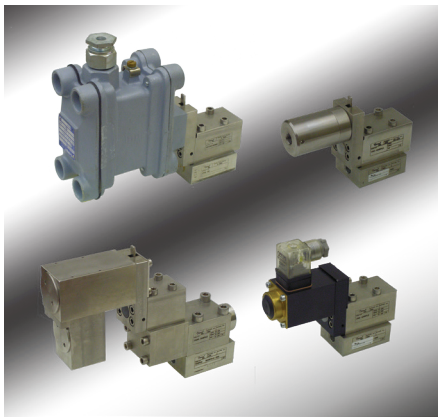
**Port Sizes:** 1/4" NPT (G1/4 C5)

**Style:** NAMUR mount

**Actuation:** Solenoid pilot, remote pilot and manual



Bulletin: NMce



# SERIES H VALVES

**Design:** Poppet

**Construction:** Stainless Steel or Aluminum

**Sealing:** Ceramic/Peek (pneumatic)  
 Ceramic/Stainless sealing (hydraulic)

**Service:** Pneumatic- to 3600 psi (245 bar)  
 Hydraulic- to 10,000 psi (680 bar)

**Function:** Two-Way, Three-Way 2/2 or 3/2

**Port Sizes:** 1/8" to 1" NPT or G

**Flow:** Up to 10.5 (40) GPM (l/min)

**Style:** Subplate mounted

**Actuation:** Solenoid pilot or remote



Bulletin: H-Tech  
 On line only



# Air Preparation Stainless Steel Regulator/Filter

**Design:** Packed balance pintle

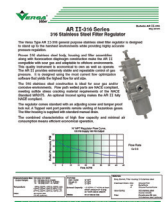
**Construction:** Stainless Steel body,  
 FKM (Fluorocarbon) sealing

**Service:** Pneumatic-to 6000 psi (413.7 bar)

**Models:** Regulator only, Filter/Regulator and  
 Filter only

Port Sizes:	Flow:	Pressure:
1/4" NPT	Cv 0.14	6000 psi
1/4" NPT	Cv 2.1	290 psi
1/2" NPT	Cv 4.2	290 psi
1" NPT	Cv 11.1	290 psi

**Style:** Side-ported



AR II Pressure  
 Regulator



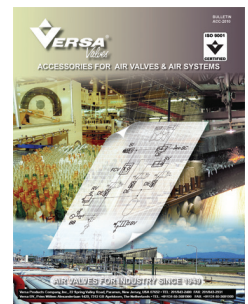
Bulletin: AR-316



# ACCESSORIES

**Function:**

- Bleed Control Valves
- Bleed Valves
- Block & Bleed Valves
- Dust Excluders
- Electrical Quick Exhaust Valves
- Flow Control Valves
- Hazardous Location Junction Box
- Quick Exhaust Valves
- Relief Valve
- Shuttle Valves
- Status Indicators



Bulletin: ACC



[www.versa-valves.com](http://www.versa-valves.com)

WORLD HEADQUARTERS:  
Versa Products Company, Inc.  
22 Spring Valley Road  
Paramus, NJ 07652, USA  
Telephone: (201) 843-2400  
FAX: (201) 843-2931  
e-mail: [sales@versa-valves.com](mailto:sales@versa-valves.com)

EUROPEAN HEADQUARTERS:  
Versa B.V.  
Prins Willem Alexanderlaan 1429  
7312 GB Apeldoorn, The Netherlands  
Telephone: +21-55-3681900  
FAX: +21-55-3681909  
e-mail: [sales@versa-valves.com](mailto:sales@versa-valves.com)



[www.versa-valves.com](http://www.versa-valves.com)