

Mettler Air[®] **Composite Push to Connect Fittings**



LIMITATION OF LIABILITY

IN NO EVENT SHALL METTLEAIR BE LIABLE FOR ANY INDIRECT, SPECIAL, INCIDENTAL, CONSEQUENTIAL, PUNITIVE DAMAGES OF ANY KIND, OR DAMAGES CAUSED BY DELAY IN PERFORMANCE, INCLUDING BUT NOT LIMITED TO LOST PROFITS OR REVENUE, COST OF SUBSTITUTES, ARISING FROM OR IN ANY WAY CONNECTED TO THIS AGREEMENT OR ORDER, WHETHER FOR BREACH OF WARRANTY OR OTHER BREACH OF CONTRACT, NEGLIGENCE OR OTHER TORT. METTLEAIR'S MAXIMUM LIABILITY FOR ANY CLAIMS ARISING FROM OR IN ANY WAY CONNECTED TO THIS AGREEMENT OR ORDER, WHETHER IN CONTRACT OR TORT OR OTHERWISE, SHALL NOT EXCEED THE INVOICED PURCHASE PRICE OF THE PRODUCT(S) GIVING RISE TO THE CLAIM.

It is agreed and acknowledged that the provisions of these Terms allocate the risks between MettleAir and the Buyer in a fair and equitable manner, MettleAir's pricing reflects this allocation of risk, and but for this allocation and limitation of liability, MettleAir would not have agreed to sell the Products to Buyer.

In jurisdictions that limit the scope of, or preclude limitations or exclusions of, remedies or damages or of liability such as liability for gross negligence or willful misconduct or do not allow implied warranties to be excluded, the limitation or exclusion of warranties, remedies, damages or liability set forth herein are intended to apply to the maximum extent permitted by applicable law.

CALIFORNIA PROPOSITION 65 WARNING

These products contain chemicals known to the State of California to cause cancer and birth defects or other reproductive harm.

WARNING: THESE PRODUCTS ARE NOT D.O.T. APPROVED

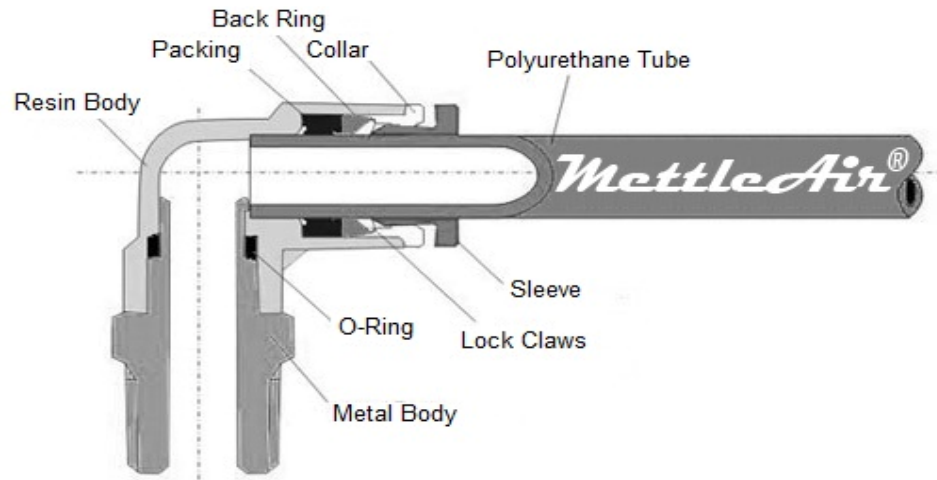
These products are not D.O.T. (Department of Transportation) approved and should not be used for automotive applications.

MTC1/4-N02

Page(s)	Model:	Tube OD:	Thread:
6 - 7	MTC = Male Straight	1/8 = 1/8"	N00 = 1/16" NPT
8	MTCR = Male Straight Round	5/32 = 5/32"	N01 = 1/8" NPT
9	MTCF = Female Straight	3/16 = 3/16"	N02 = 1/4" NPT
10	MTMF = Female Bulkhead	1/4 = 1/4"	N03 = 3/8" NPT
11 - 12	MTL = Male Elbow	5/16 = 5/16"	N04 = 1/2" NPT
13	MTLL = Male Extended Elbow	3/8 = 3/8"	
14	MTLF = Female Elbow	1/2 = 1/2"	O1 = 1/8" BSPT
14	MT45L = 45 Degree Male Elbow		O2 = 1/4" BSPT
14	MTLS = Low Profile Male Elbow	3 = 3 mm	O3 = 3/8" BSPT
15	MTX = Male Y Connector	4 = 4 mm	O4 = 1/2" BSPT
16	MTH = Male Banjo	6 = 6 mm	
17	MT2H = Male Double Banjo	8 = 8 mm	G01 = 1/8" BSPP
17	MT3H = Male Triple Banjo	10 = 10 mm	G02 = 1/4" BSPP
18	MTHF = Male / Female Stacking Elbow	12 = 12 mm	G03 = 3/8" BSPP
19	MTB = Male Branch T	14 = 14 mm	G04 = 1/2" BSPP
20	MTD = Male Run T	16 = 16 mm	
21	MTBF = Female Branch T		U10 = 10-32 UNF
21	MTKD = Male Branch Manifold		M3 = M3 x 0.5
21	MTU = Straight Union / Reducer		M5 = M5 x 0.8
22	MT45U = 45 Degree Union		M6 = M6 x 1.0
22	MTV = Elbow Union		M7 = M7 x 1.0
22	MTE = T Union / Reducer		M8 = M8 x 1.25
23	MTY = Y Union / Reducer		
23	MTZA = Cross Union		U01 = 1/8" UNIVERSAL
23	MTKG = Manifold Union / Reducer		U02 = 1/4" UNIVERSAL
24	MTGJ = Plug-In Reducer		U03 = 3/8" UNIVERSAL
24	MTIGJ = Stem Union		U04 = 1/2" UNIVERSAL
24	MTLGJ = Plug-In Elbow		
24	MTYGJ = Plug-In Y		
24	MTPP = Plastic Plug		
25	MTCP = Push Cap		
25	MTM = Bulkhead Union		
26 - 27	MSC = Speed Control Meter Out		
27	MSC-IN = Speed Control Meter In		
27	MSCL = 3D Speed Control Elbow		
28	MHVU = 3 Way Hand Valve Union		
28	MHVS = 3 Way Hand Valve Male		
28	MSCA = Inline Speed Control		
29	MCVC = Male Check Valve		
29	MTSC = Stop Fitting Male Straight		
29	MCVU = Check Valve Union		



Example:
MTC1/4-N02 Straight Male Connector
with 1/4" OD Tube to 1/4" NPT.



	SPECIFICATIONS	
Fluid Type	AIR	
Operating Pressure	0-150 PSI	
Working Temperature	32-140° F	0-60° C
Metallic Body	Nickel-plated Brass	
O-Ring	NBR (Acrylonitrile butadiene rubber)	
Plastic Body	PBT (Polybutylene terephthalate)	
Packing	NBR (Acrylonitrile butadiene rubber)	
Back Ring	POM (Polyoxymethylene plastic)	
Lock Claws	Stainless Steel	
Collar	Zinc Alloy	
Sleeve	POM (Polyoxymethylene plastic)	

Features

- Designed for Polyurethane or Nylon Tubing
- Quick and reliable connections
- Reusable: Multiple connections/disconnections
- Metallic body made of non-corrosive, non-contaminant Nickel Plated Brass (threaded models)
- Pre-coated threads (NPT, BSPT) are ready for use without additional sealing
- Outside (and Inside where applicable) hexagonal wrench tightening
- All Metric, BSPP (G), UNF threaded fittings come equipped with O-Ring

CLICK IMAGE FOR LIST OF AVAILABLE SIZES



MTC



MTCR



MTCF



MTMF



MTL



MTLL



MTLF



MT45L



MTLS



MTX



MTH



MT2H



MT3H



MTHF



MTD



MTB



MTBF



MTKD



MTU



MT45U



MTV



MTE



MTY



MTZA



MTKG



MTGJ



MTIGJ



MTLGJ



MTYGJ



MTPP



MTCP



MTM



MSC



MSC-IN



MSCL



MSCA



MHVS



MHVS



MCVC



MTSC



MCVU

Male Straight Connector

Inch Size Tubing



MettlerAir Part Code Guide
[Click here for Page 3](#)

Part #

MTC1/8-U10
MTC1/8-N00
MTC1/8-N01
MTC1/8-N02
MTC5/32-U10
MTC5/32-N00
MTC5/32-N01
MTC5/32-N02
MTC3/16-U10
MTC3/16-N00
MTC3/16-N01
MTC3/16-N02
MTC3/16-N03
MTC1/4-U10
MTC1/4-N00
MTC1/4-N01
MTC1/4-N02
MTC1/4-N03
MTC1/4-N04
MTC5/16-N01
MTC5/16-N02
MTC5/16-N03
MTC5/16-N04
MTC3/8-N01
MTC3/8-N02
MTC3/8-N03
MTC3/8-N04
MTC1/2-N02
MTC1/2-N03
MTC1/2-N04

Part #

MTC1/8-M5
MTC1/8-M6
MTC1/8-M7
MTC1/8-M8
MTC3/16-M5
MTC3/16-M6
MTC3/16-M7
MTC3/16-M8
MTC1/4-M5
MTC1/4-M6
MTC1/4-M7
MTC1/4-M8
MTC1/4-01
MTC1/4-02
MTC1/4-03
MTC3/8-01
MTC3/8-02
MTC3/8-03

Part #

MTC1/8-G01
MTC5/32-G01
MTC3/16-G01
MTC1/4-G01
MTC1/4-G02
MTC1/4-G03
MTC5/16-G01
MTC5/16-G02
MTC3/8-G01
MTC3/8-G02
MTC3/8-G03
MTC3/8-G04
MTC1/2-G03
MTC1/2-G04

Part #

MTC5/32-U01
MTC1/4-U01
MTC1/4-U02
MTC5/16-U01
MTC5/16-U02
MTC5/16-U03
MTC3/8-U02
MTC3/8-U03

MTC connectors feature Internal hex for allen key / hex key

Male Straight Connector

Metric Size Tubing



MettlerAir Part Code Guide
[Click here for Page 3](#)

Part #

MTC4-U10
MTC4-N00
MTC4-N01
MTC4-N02
MTC6-U10
MTC6-N00
MTC6-N01
MTC6-N02
MTC6-N03
MTC6-N04
MTC8-N01
MTC8-N02
MTC8-N03
MTC10-N01
MTC10-N02
MTC10-N03
MTC10-N04
MTC12-N02
MTC12-N03
MTC12-N04
MTC14-N03
MTC14-N04
MTC16-N03
MTC16-N04

Part #

MTC4-M5
MTC4-M6
MTC4-M7
MTC4-M8
MTC4-01
MTC4-02
MTC4-03
MTC6-M5
MTC6-M6
MTC6-M7
MTC6-M8
MTC6-01
MTC6-02
MTC6-03
MTC6-04
MTC8-01
MTC8-02
MTC8-03
MTC8-04
MTC10-01
MTC10-02
MTC10-03
MTC10-04
MTC12-01
MTC12-02
MTC12-03
MTC12-04
MTC14-03
MTC14-04
MTC16-03
MTC16-04

Part #

MTC4-G01
MTC4-G02
MTC6-G01
MTC6-G02
MTC6-G03
MTC8-G01
MTC8-G02
MTC8-G03
MTC10-G01
MTC10-G02
MTC10-G03
MTC10-G04
MTC12-G02
MTC12-G03
MTC12-G04

Part #

MTC4-U01
MTC6-U01
MTC6-U02
MTC8-U01
MTC8-U02
MTC8-U03

MTC connectors feature Internal hex for allen key / hex key

Male Straight Round Connector



MettlerAir Part Code Guide
[Click here for Page 3](#)

Part #

MTCR1/8-U10
MTCR1/8-N01
MTCR1/8-N02
MTCR5/32-U10
MTCR5/32-N01
MTCR3/16-U10
MTCR3/16-N01
MTCR3/16-N02
MTCR3/16-N03
MTCR1/4-U10
MTCR1/4-N01
MTCR1/4-N02
MTCR1/4-N03
MTCR5/16-N01
MTCR5/16-N02
MTCR3/8-N02
MTCR3/8-N03
MTCR1/2-N03
MTCR1/2-N04

Part #

MTCR4-U10
MTCR4-N01
MTCR4-N02
MTCR6-U10
MTCR6-N01
MTCR6-N02
MTCR6-N03
MTCR8-N01
MTCR8-N02
MTCR8-N03
MTCR10-N02
MTCR10-N03
MTCR12-N03
MTCR12-N04

Part #

MTCR4-M5
MTCR4-M6
MTCR4-01
MTCR4-02
MTCR6-M5
MTCR6-M6
MTCR6-01
MTCR6-02
MTCR6-03
MTCR8-01
MTCR8-02
MTCR8-03

MTCR connectors feature Internal hex for allen key / hex key

Female Straight Connector



MettleAir Part Code Guide
[Click here for Page 3](#)

Part #

MTCF1/8-U10
MTCF1/8-N01
MTCF1/8-N02
MTCF5/32-U10
MTCF5/32-N01
MTCF5/32-N02
MTCF3/16-U10
MTCF3/16-N01
MTCF3/16-N02
MTCF3/16-N03
MTCF1/4-U10
MTCF1/4-N01
MTCF1/4-N02
MTCF1/4-N03
MTCF5/16-N01
MTCF5/16-N02
MTCF5/16-N03
MTCF3/8-N01
MTCF3/8-N02
MTCF3/8-N03
MTCF3/8-N04
MTCF1/2-N02
MTCF1/2-N03
MTCF1/2-N04

Part #

MTCF1/4-M7
MTCF1/4-M8

MTCF1/4-G01
MTCF1/4-G02
MTCF3/8-G02
MTCF3/8-G03

Part #

MTCF4-U10
MTCF4-N01
MTCF4-N02
MTCF6-U10
MTCF6-N01
MTCF6-N02
MTCF6-N03
MTCF8-N01
MTCF8-N02
MTCF8-N03
MTCF10-N01
MTCF10-N02
MTCF10-N03
MTCF10-N04
MTCF12-N02
MTCF12-N03
MTCF12-N04

Part #

MTCF4-M5
MTCF4-M6
MTCF4-M7
MTCF4-M8
MTCF4-01
MTCF4-02
MTCF4-03
MTCF6-M5
MTCF6-M6
MTCF6-M7
MTCF6-M8
MTCF6-01
MTCF6-02
MTCF6-03
MTCF8-01 (See MTCF8-G01)
MTCF8-02 (See MTCF8-G02)
MTCF8-03 (See MTCF8-G03)
MTCF8-04 (See MTCF8-G04)
MTCF10-01
MTCF10-02 (See MTCF10-G02)
MTCF10-03 (See MTCF10-G03)
MTCF10-04
MTCF12-02 (See MTCF12-G02)
MTCF12-03 (See MTCF12-G03)
MTCF12-03
MTCF12-04

Part #

MTCF4-G01
MTCF4-G02
MTCF4-G03

MTCF6-G01
MTCF6-G02
MTCF6-G03
MTCF8-G01
MTCF8-G02
MTCF8-G03
MTCF8-G04
MTCF10-G01
MTCF10-G02
MTCF10-G03
MTCF10-G04
MTCF12-G01
MTCF12-G02
MTCF12-G03
MTCF12-G04

Female Bulkhead Connector



MettleAir Part Code Guide
[Click here for Page 3](#)

Part #

MTMF1/8-U10
MTMF1/8-N01
MTMF1/8-N02
MTMF5/32-U10
MTMF5/32-N01
MTMF5/32-N02
MTMF3/16-U10
MTMF3/16-N01
MTMF3/16-N02
MTMF3/16-N03
MTMF1/4-U10
MTMF1/4-N01
MTMF1/4-N02
MTMF1/4-N03
MTMF5/16-N01
MTMF5/16-N02
MTMF5/16-N03
MTMF3/8-N01
MTMF3/8-N02
MTMF3/8-N03
MTMF3/8-N04
MTMF1/2-N02
MTMF1/2-N03
MTMF1/2-N04

Part #

MTMF4-U10
MTMF4-N01
MTMF4-N02
MTMF6-U10
MTMF6-N01
MTMF6-N02
MTMF6-N03
MTMF8-N01
MTMF8-N02
MTMF8-N03
MTMF10-N02
MTMF10-N03
MTMF10-N04
MTMF12-N03
MTMF12-N04

Part #

MTMF4-M5
MTMF4-M6
MTMF4-01
MTMF4-02
MTMF6-M5
MTMF6-M6
MTMF6-01
MTMF6-02
MTMF6-03
MTMF8-01
MTMF8-02
MTMF8-03
MTMF8-04
MTMF10-01 (See MTMF10-G01)
MTMF10-02
MTMF10-03
MTMF10-04
MTMF12-02 (See MTMF12-G02)
MTMF12-03
MTMF12-04

Part #

MTMF4-G01
MTMF4-G02
MTMF6-G01
MTMF6-G02
MTMF6-G03
MTMF8-G01
MTMF8-G02
MTMF8-G03
MTMF8-G04
MTMF10-G01
MTMF10-G02
MTMF10-G03
MTMF10-G04
MTMF12-G02
MTMF12-G03
MTMF12-G04

90° Elbow Male Swivel Connector Inch Size Tubing*



↻
360°

MettlerAir Part Code Guide
Click here for Page 3

Part

MTL1/8-U10
MTL1/8-N00
MTL1/8-N01
MTL1/8-N02
MTL5/32-U10
MTL5/32-N00
MTL5/32-N01
MTL5/32-N02
MTL3/16-U10
MTL3/16-N00
MTL3/16-N01
MTL3/16-N02
MTL3/16-N03
MTL1/4-U10
MTL1/4-N00
MTL1/4-N01
MTL1/4-N02
MTL1/4-N03
MTL1/4-N04
MTL5/16-N01
MTL5/16-N02
MTL5/16-N03
MTL5/16-N04
MTL3/8-N01
MTL3/8-N02
MTL3/8-N03
MTL3/8-N04
MTL1/2-N02
MTL1/2-N03
MTL1/2-N04

Part

MTL1/8-M5
MTL1/8-M6
MTL1/8-M7
MTL1/8-M8
MTL3/16-M5
MTL3/16-M6
MTL3/16-M7
MTL3/16-M8
MTL1/4-M5
MTL1/4-M6
MTL1/4-M7
MTL1/4-M8
MTL1/4-01
MTL1/4-02
MTL1/4-03
MTL3/8-02
MTL3/8-03

Part

MTL1/8-G01
MTL5/32-G01
MTL3/16-G01
MTL1/4-G01
MTL1/4-G02
MTL1/4-G03
MTL5/16-G01
MTL5/16-G02
MTL3/8-G01
MTL3/8-G02
MTL3/8-G03
MTL3/8-G04
MTL1/2-G03
MTL1/2-G04

Part

MTL5/32-U01
MTL1/4-U01
MTL1/4-U02
MTL5/16-U01
MTL5/16-U02
MTL5/16-U03
MTL3/8-U02
MTL3/8-U03

*MTL Connectors can rotate for installation / adjustment purposes

90° Elbow Male Swivel Connector Metric Size Tubing*



MettleAir Part Code Guide
Click here for Page 3

Part #
MTL4-U10
MTL4-N01
MTL4-N00
MTL4-N02
MTL6-U10
MTL6-N00
MTL6-N01
MTL6-N02
MTL6-N03
MTL6-N04
MTL8-N01
MTL8-N02
MTL8-N03
MTL10-N01
MTL10-N02
MTL10-N03
MTL10-N04
MTL12-N02
MTL12-N03
MTL12-N04
MTL14-N03
MTL14-N04
MTL16-N03
MTL16-N04

Part #
MTL4-M5
MTL4-M6
MTL4-M7
MTL4-M8
MTL4-01
MTL4-02
MTL4-03
MTL6-M5
MTL6-M6
MTL6-M7
MTL6-M8
MTL6-01
MTL6-02
MTL6-03
MTL6-04
MTL8-01
MTL8-02
MTL8-03
MTL8-04
MTL10-01
MTL10-02
MTL10-03
MTL10-04
MTL12-01
MTL12-02
MTL12-03
MTL12-04
MTL14-03
MTL14-04
MTL16-03
MTL16-04

Part #
MTL4-G01
MTL4-G02
MTL6-G01
MTL6-G02
MTL6-G03
MTL8-G01
MTL8-G02
MTL8-G03
MTL10-G01
MTL10-G02
MTL10-G03
MTL10-G04
MTL12-G03
MTL12-G04

Part #
MTL4-U01
MTL6-U01
MTL6-U02
MTL8-U01
MTL8-U02
MTL8-U03

*MTL Connectors can rotate for installation / adjustment purposes

Male Extended 90° Elbow Connector*

MettlerAir Part Code Guide
[Click here for Page 3](#)



Part

MTLL1/8-U10
MTLL1/8-N01
MTLL1/8-N02
MTLL5/32-U10
MTLL5/32-N01
MTLL5/32-N02
MTLL3/16-U10
MTLL3/16-N01
MTLL3/16-N02
MTLL3/16-N03
MTLL1/4-U10
MTLL1/4-N01
MTLL1/4-N02
MTLL1/4-N03
MTLL5/16-N01
MTLL5/16-N02
MTLL5/16-N03
MTLL3/8-N01
MTLL3/8-N02
MTLL3/8-N03
MTLL3/8-N04
MTLL1/2-N02
MTLL1/2-N03
MTLL1/2-N04

Part

MTLL4-U10
MTLL4-N01
MTLL4-N02
MTLL6-U10
MTLL6-N01
MTLL6-N02
MTLL6-N03
MTLL8-N01
MTLL8-N02
MTLL8-N03
MTLL10-N01
MTLL10-N02
MTLL10-N03
MTLL10-N04
MTLL12-N02
MTLL12-N03
MTLL12-N04

Part

MTLL4-M5
MTLL4-M6
MTLL4-01
MTLL4-02
MTLL4-03
MTLL6-M5
MTLL6-M6
MTLL6-01
MTLL6-02
MTLL6-03
MTLL8-01
MTLL8-02
MTLL8-03
MTLL8-04
MTLL10-01
MTLL10-02
MTLL10-03
MTLL10-04
MTLL12-01
MTLL12-02
MTLL12-03
MTLL12-04

*MTLL Connectors can rotate for installation / adjustment purposes

Female Elbow Connector*



MettleAir Part Code Guide
Click here for Page 3

Part #

MTLF1/8-U10
MTLF5/32-U10
MTLF5/32-N01
MTLF1/4-N01
MTLF1/4-N02
MTLF5/16-N01
MTLF5/16-N02
MTLF5/16-N03
MTLF3/8-N01
MTLF3/8-N02
MTLF3/8-N03

Part #

MTLF4-U10
MTLF4-N01
MTLF6-N01
MTLF6-N02
MTLF8-N01
MTLF8-N02
MTLF8-N03
MTLF10-N02
MTLF10-N03

Part #

MTLF4-G01
MTLF4-G02
MTLF6-G01
MTLF6-G02
MTLF8-G01
MTLF8-G02
MTLF8-G03
MTLF10-G02
MTLF10-G03

45 Degree Male Elbow Connector*



Part #

MT45L5/32-U10
MT45L5/32-N01
MT45L1/4-U10
MT45L1/4-N01
MT45L1/4-N02
MT45L1/4-N03
MT45L1/4-N04
MT45L5/16-N01
MT45L5/16-N02
MT45L5/16-N03
MT45L3/8-N02
MT45L3/8-N03
MT45L3/8-N04
MT45L1/2-N03
MT45L1/2-N04

Part #

MT45L4-U10
MT45L4-N01
MT45L8-N01
MT45L8-N02
MT45L8-N03

Low Profile Male Elbow Connector*



Part #

MTLS4-G01
MTLS4-G02
MTLS6-G01
MTLS6-G02

MTLS5/32-G01
MTLS5/32-G02
MTLS1/4-G01
MTLS1/4-G02

*MTLF, MT45L, MTLS Connectors can rotate for installation / adjustment purposes

Male Y Connector*



MettlerAir Part Code Guide
[Click here for Page 3](#)

Part #

MTX1/8-U10
MTX1/8-N01
MTX1/8-N02
MTX5/32-U10
MTX5/32-N01
MTX5/32-N02
MTX3/16-U10
MTX3/16-N01
MTX3/16-N02
MTX3/16-N03
MTX1/4-U10
MTX1/4-N01
MTX1/4-N02
MTX1/4-N03
MTX5/16-N01
MTX5/16-N02
MTX5/16-N03
MTX3/8-N01
MTX3/8-N02
MTX3/8-N03
MTX3/8-N04
MTX1/2-N02
MTX1/2-N03
MTX1/2-N04

Part #

MTX4-U10
MTX4-N01
MTX4-N02
MTX6-U10
MTX6-N01
MTX6-N02
MTX6-N03
MTX8-N01
MTX8-N02
MTX8-N03
MTX10-N01
MTX10-N02
MTX10-N03
MTX10-N04
MTX12-N02
MTX12-N03
MTX12-N04

Part #

MTX4-M5
MTX4-M6
MTX4-01
MTX4-02
MTX4-03
MTX6-M5
MTX6-M6
MTX6-01
MTX6-02
MTX6-03
MTX6-04
MTX8-01
MTX8-02
MTX8-03
MTX8-04
MTX10-01
MTX10-02
MTX10-03
MTX10-04
MTX12-01
MTX12-02
MTX12-03
MTX12-04

*MTX Connectors can rotate for installation / adjustment purposes

Male Swivel Banjo Connector*



360°

MettlerAir Part Code Guide
Click here for Page 3

Part

MTH5/32-U10
MTH5/32-N01
MTH5/32-N02
MTH1/4-U10
MTH1/4-N01
MTH1/4-N02
MTH5/16-N01
MTH5/16-N02
MTH5/16-N03
MTH3/8-N01
MTH3/8-N02
MTH3/8-N03

MTH4-N01
MTH4-N02
MTH6-N01
MTH6-N02
MTH6-N03
MTH8-N01
MTH8-N02
MTH8-N03
MTH10-N02
MTH10-N03

Part

MTH4-M5
MTH4-01
MTH4-02
MTH6-M5
MTH6-01
MTH6-02
MTH8-01
MTH8-02
MTH8-03
MTH10-02
MTH10-03

Part

MTH4-G01
MTH6-G01
MTH6-G02
MTH8-G01
MTH8-G02
MTH8-G03
MTH10-G02
MTH10-G03

MTH1/4-G01
MTH1/4-G02
MTH3/8-G02
MTH3/8-G03

*MTH Connectors can rotate for installation / adjustment purposes

Male Double Banjo Connector*



MettleAir Part Code Guide
[Click here for Page 3](#)

Part #

MT2H5/32-N01
MT2H5/32-N02
MT2H3/16-N01
MT2H3/16-N02
MT2H3/16-N03
MT2H1/4-N01
MT2H1/4-N02
MT2H1/4-N03
MT2H5/16-N01
MT2H5/16-N02
MT2H5/16-N03
MT2H5/16-N04
MT2H3/8-N01
MT2H3/8-N02
MT2H3/8-N03
MT2H3/8-N04
MT2H1/2-N03
MT2H1/2-N04

Part #

MT2H6-N01
MT2H6-N02
MT2H6-N03
MT2H10-N02
MT2H10-N03
MT2H12-N03
MT2H12-N04

Part #

MT2H4-01
MT2H4-02
MT2H6-01
MT2H6-02
MT2H6-03
MT2H8-01
MT2H8-02
MT2H8-03
MT2H8-04
MT2H10-01
MT2H10-02
MT2H10-03
MT2H10-04
MT2H12-03
MT2H12-04

Male Triple Banjo Connector*



Part #

MT3H1/4-N03
Ask us about additional sizes

*Each branch of MT2H, MT3H Connectors can rotate in 360 Degrees independently for installation / adjustment purposes

Male / Female Stacking Elbow Connector*



MettleAir Part Code Guide
[Click here for Page 3](#)

Part #

MTHF5/32-N01
MTHF5/32-N02
MTHF1/4-N01
MTHF1/4-N02
MTHF1/4-N03
MTHF5/16-N01
MTHF5/16-N02
MTHF5/16-N03
MTHF3/8-N01
MTHF3/8-N02
MTHF3/8-N03
MTHF3/8-N04
MTHF1/2-N02
MTHF1/2-N03
MTHF1/2-N04

Part #

MTHF4-N01
MTHF4-N02
MTHF6-N01
MTHF6-N02
MTHF6-N03
MTHF8-N01
MTHF8-N02
MTHF8-N03
MTHF8-N04
MTHF10-N01
MTHF10-N02
MTHF10-N03
MTHF10-N04
MTHF12-N02
MTHF12-N03
MTHF12-N04

Part #

MTHF4-M5
MTHF4-M6
MTHF4-01
MTHF4-02
MTHF4-03
MTHF6-M5
MTHF6-M6
MTHF6-01
MTHF6-02
MTHF6-03
MTHF8-01
MTHF8-02
MTHF8-03
MTHF8-04
MTHF10-01
MTHF10-02
MTHF10-03
MTHF10-04
MTHF12-01
MTHF12-02
MTHF12-03
MTHF12-04

*MTHF Connectors can rotate for installation / adjustment purposes

Male Branch T Connector*



MettleAir Part Code Guide
Click here for Page 3

Part #

MTB1/8-U10
MTB1/8-N01
MTB1/8-N02
MTB5/32-U10
MTB5/32-N01
MTB5/32-N02
MTB3/16-U10
MTB3/16-N01
MTB3/16-N02
MTB3/16-N03
MTB1/4-U10
MTB1/4-N01
MTB1/4-N02
MTB1/4-N03
MTB5/16-N01
MTB5/16-N02
MTB5/16-N03
MTB3/8-N01
MTB3/8-N02
MTB3/8-N03
MTB3/8-N04
MTB1/2-N02
MTB1/2-N03
MTB1/2-N04

Part #

MTB1/4-G01
MTB1/4-G02
MTB1/4-G03
MTB1/4-G04
MTB3/8-G02
MTB3/8-G03
MTB3/8-G04

Part #

MTB4-M5
MTB4-M6
MTB4-01
MTB4-02
MTB4-03
MTB6-M5
MTB6-M6
MTB6-01
MTB6-02
MTB6-03
MTB6-04
MTB8-01
MTB8-02
MTB8-03
MTB8-04
MTB10-01
MTB10-02
MTB10-03
MTB10-04
MTB12-01
MTB12-02
MTB12-03
MTB12-04

Part #

MTB4-U10
MTB4-N01
MTB4-N02
MTB6-U10
MTB6-N01
MTB6-N02
MTB6-N03
MTB8-N01
MTB8-N02
MTB8-N03
MTB10-N01
MTB10-N02
MTB10-N03
MTB10-N04
MTB12-N02
MTB12-N03
MTB12-N04

Part #

MTB4-G01
MTB4-G02
MTB6-G01
MTB6-G02
MTB6-G03
MTB8-G01
MTB8-G02
MTB8-G03
MTB10-G02
MTB10-G03
MTB10-G04

*MTB Connectors can rotate for installation / adjustment purposes

Male Run T Connector*



MettlerAir Part Code Guide
[Click here for Page 3](#)

Part #

MTD1/8-U10
MTD1/8-N01
MTD1/8-N02
MTD5/32-U10
MTD5/32-N01
MTD5/32-N02
MTD3/16-U10
MTD3/16-N01
MTD3/16-N02
MTD3/16-N03
MTD1/4-U10
MTD1/4-N01
MTD1/4-N02
MTD1/4-N03
MTD5/16-N01
MTD5/16-N02
MTD5/16-N03
MTD3/8-N01
MTD3/8-N02
MTD3/8-N03
MTD3/8-N04
MTD1/2-N02
MTD1/2-N03
MTD1/2-N04

Part #

MTD4-U10
MTD4-N01
MTD4-N02
MTD6-U10
MTD6-N01
MTD6-N02
MTD6-N03
MTD8-N01
MTD8-N02
MTD8-N03
MTD10-N01
MTD10-N02
MTD10-N03
MTD10-N04
MTD12-N02
MTD12-N03
MTD12-N04

Part #

MTD4-M5
MTD4-M6
MTD4-01
MTD4-02
MTD4-03
MTD6-M5
MTD6-M6
MTD6-01
MTD6-02
MTD6-03
MTD6-04
MTD8-01
MTD8-02
MTD8-03
MTD8-04
MTD10-01
MTD10-02
MTD10-03
MTD10-04
MTD12-01
MTD12-02
MTD12-03
MTD12-04

*MTD Connectors can rotate for installation / adjustment purposes

Female Branch T Connector*



Straight Union/Reducer



Branch Manifold Male Connector*



Part #
MTBF5/32-N01
MTBF1/4-N01
MTBF1/4-N02
MTBF5/16-N01
MTBF5/16-N02
MTBF5/16-N03
MTBF3/8-N02
MTBF3/8-N03
MTBF1/2-N03
MTBF1/2-N04

MettleAir Part Code Guide
[Click here for Page 3](#)

Part #	Part #	D1 - D2	T
MTU1/8	MTKD5/32-N01	5/32 - 5/32	1/8" NPT
MTU5/32-1/8	MTKD5/32-N02	5/32 - 5/32	1/4" NPT
MTU5/32	MTKD1/4-N01	1/4 - 1/4	1/8" NPT
MTU3/16-5/32	MTKD1/4-N02	1/4 - 1/4	1/4" NPT
MTU3/16	MTKD5/16-N01	5/16 - 5/16	1/8" NPT
MTU1/4-1/8	MTKD5/16-N02	5/16 - 5/16	1/4" NPT
MTU1/4-5/32	MTKD3/8-N02	3/8 - 3/8	1/4" NPT
MTU1/4-3/16	MTKD3/8-N03	3/8 - 3/8	3/8" NPT
MTU1/4	MTKD1/2-N03	1/2 - 1/2	3/8" NPT
MTU5/16-1/4	MTKD1/2-N04	1/2 - 1/2	1/2" NPT
MTU5/16			
MTU3/8-1/4	MTKD3/16-5/32-N01	3/16 - 5/32	1/8" NPT
MTU3/8-5/16	MTKD1/4-5/32-N01	1/4 - 5/32	1/4" NPT
MTU3/8	MTKD1/4-5/32-N02	1/4 - 5/32	1/4" NPT
MTU1/2-1/4	MTKD5/16-5/32-N02	5/16 - 5/32	1/4" NPT
MTU1/2-5/16	MTKD5/16-3/16-N02	5/16 - 3/16	1/4" NPT
MTU1/2-3/8	MTKD5/16-1/4-N02	5/16 - 1/4	1/4" NPT
MTU1/2	MTKD3/8-5/16-N03	3/8 - 5/16	3/8" NPT
MTU4	MTKD4-01	4 - 4	1/8" BSPT
MTU6-4	MTKD4-02	4 - 4	1/4" BSPT
MTU6	MTKD6-01	6 - 6	1/8" BSPT
MTU8-6	MTKD6-02	6 - 6	1/4" BSPT
MTU8	MTKD8-01	8 - 8	1/8" BSPT
MTU10-6	MTKD8-02	8 - 8	1/4" BSPT
MTU10-8	MTKD10-02	10 - 10	1/4" BSPT
MTU10	MTKD10-03	10 - 10	3/8" BSPT
MTU12-6	MTKD12-03	12 - 12	3/8" BSPT
MTU12-8	MTKD12-04	12 - 12	1/2" BSPT
MTU12-10			
MTU12	MTKD6-N01	6 - 6	1/8" NPT
MTU14	MTKD6-N02	6 - 6	1/4" NPT
MTU14-12	MTKD6-4-N01	6 - 4	1/8" NPT
MTU16	MTKD6-4-N02	6 - 4	1/4" NPT
MTU16-12			
MTU16-14	MTKD6-4-01	6 - 4	1/8" BSPT
	MTKD8-4-02	8 - 4	1/4" BSPT
MTU1/4-6	MTKD8-6-02	8 - 6	1/4" BSPT
MTU3/8-10	MTKD10-8-03	10 - 8	3/8" BSPT
MTU1/2-12			

*MTBF, MTKD, MTU Connectors can rotate for installation / adjustment purposes

45 Degree Union



Part #
MT45U1/8
MT45U5/32
MT45U1/4
MT45U5/16
MT45U3/8
MT45U1/2
MT45U4
MT45U6
MT45U8
MT45U10
MT45U12

Elbow Union



Part #	
MTV1/8	
MTV5/32	
MTV3/16	
MTV1/4	
MTV5/16	
MTV3/8-1/4	Reducer
MTV3/8	
MTV1/2	
MTV4	
MTV6	
MTV8	
MTV10	
MTV12	
MTV14	
MTV16	

T Union / Reducer



Part #	D1 - D2
MTE1/8-1/8	1/8 - 1/8
MTE5/32-5/32	5/32 - 5/32
MTE5/32-3/16	5/32 - 3/16
MTE5/32-1/4	5/32 - 1/4
MTE3/16-5/32	3/16 - 5/32
MTE3/16-3/16	3/16 - 3/16
MTE3/16-1/4	3/16 - 1/4
MTE1/4-5/32	1/4 - 5/32
MTE1/4-3/16	1/4 - 3/16
MTE1/4-1/4	1/4 - 1/4
MTE1/4-5/16	1/4 - 5/16
MTE1/4-3/8	1/4 - 3/8
MTE5/16-1/4	5/16 - 1/4
MTE5/16-5/16	5/16 - 5/16
MTE5/16-3/8	5/16 - 3/8
MTE3/8-1/4	3/8 - 1/4
MTE3/8-5/16	3/8 - 5/16
MTE3/8-3/8	3/8 - 3/8
MTE3/8-1/2	3/8 - 1/2
MTE1/2-1/4	1/2 - 1/4
MTE1/2-5/16	1/2 - 5/16
MTE1/2-3/8	1/2 - 3/8
MTE1/2-1/2	1/2 - 1/2

Part #	D1 - D2
MTE4-4	4 - 4
MTE4-6	4 - 6
MTE6-4	6 - 4
MTE6-6	6 - 6
MTE6-8	6 - 8
MTE6-10	6 - 10
MTE8-6	8 - 6
MTE8-8	8 - 8
MTE8-10	8 - 10
MTE10-6	10 - 6
MTE10-8	10 - 8
MTE10-10	10 - 10
MTE10-12	10 - 12
MTE12-08	12 - 08
MTE12-10	12 - 10
MTE12-12	12 - 12
MTE14-12	14 - 12
MTE14-14	14 - 14
MTE16-12	16 - 12
MTE16-14	16 - 14
MTE16-16	16 - 16

MettleAir Part Code Guide
[Click here for Page 3](#)

Y Union / Reducer



Part #	D1 - D2
MTY1/8-1/8	1/8 - 1/8
MTY5/32-5/32	5/32 - 5/32
MTY3/16-5/32	3/16 - 5/32
MTY3/16-3/16	3/16 - 3/16
MTY1/4-3/16	1/4 - 3/16
MTY1/4-5/32	1/4 - 5/32
MTY1/4-1/4	1/4 - 1/4
MTY5/16-1/4	5/16 - 1/4
MTY5/16-5/16	5/16 - 5/16
MTY3/8-1/4	3/8 - 1/4
MTY3/8-5/16	3/8 - 5/16
MTY3/8-3/8	3/8 - 3/8
MTY1/2-3/8	1/2 - 3/8
MTY1/2-1/2	1/2 - 1/2
MTY4-4	4 - 4
MTY6-4	6 - 4
MTY6-6	6 - 6
MTY8-6	8 - 6
MTY8-8	8 - 8
MTY10-6	10 - 6
MTY10-8	10 - 8
MTY10-10	10 - 10
MTY12-10	12 - 10
MTY12-12	12 - 12
MTY14-14	14 - 14
MTY16-16	16 - 16

Cross Union



Part #
MTZA1/8
MTZA5/32
MTZA3/16
MTZA1/4
MTZA5/16
MTZA3/8
MTZA1/2
MTZA4
MTZA6
MTZA8
MTZA10
MTZA12

MettleAir Part Code Guide
[Click here for Page 3](#)

Manifold Union / Reducer



Part #	D1 - D2
MTKG1/8-1/8	1/8 - 1/8
MTKG5/32-5/32	5/32 - 5/32
MTKG3/16-5/32	3/16 - 5/32
MTKG3/16-3/16	3/16 - 3/16
MTKG1/4-1/8	1/4 - 1/8
MTKG1/4-5/32	1/4 - 5/32
MTKG1/4-3/16	1/4 - 3/16
MTKG1/4-1/4	1/4 - 1/4
MTKG5/16-5/32	5/16 - 5/32
MTKG5/16-3/16	5/16 - 3/16
MTKG5/16-1/4	5/16 - 1/4
MTKG5/16-5/16	5/16 - 5/16
MTKG3/8-1/4	3/8 - 1/4
MTKG3/8-5/16	3/8 - 5/16
MTKG3/8-3/8	3/8 - 3/8
MTKG1/2-5/16	1/2 - 5/16
MTKG1/2-3/8	1/2 - 3/8
MTKG4-4	4 - 4
MTKG6-4	6 - 4
MTKG6-6	6 - 6
MTKG8-4	8 - 4
MTKG8-6	8 - 6
MTKG8-8	8 - 8
MTKG10-6	10 - 6
MTKG10-8	10 - 8
MTKG10-10	10 - 10
MTKG12-10	12 - 10

Plug-In Reducer



Part #	D1 - D2
MTGJ1/4-1/8	1/4 - 1/8
MTGJ1/4-5/32	1/4 - 5/32
MTGJ5/16-5/32	5/16 - 5/32
MTGJ5/16-1/4	5/16 - 1/4
MTGJ3/8-1/4	3/8 - 1/4
MTGJ3/8-5/16	3/8 - 5/16
MTGJ1/2-1/4	1/2 - 1/4
MTGJ1/2-5/16	1/2 - 5/16
MTGJ1/2-3/8	1/2 - 3/8
MTGJ6-4	6 - 4
MTGJ8-4	8 - 4
MTGJ8-6	8 - 6
MTGJ10-6	10 - 6
MTGJ10-8	10 - 8
MTGJ12-6	12 - 6
MTGJ12-8	12 - 8
MTGJ12-10	12 - 10

Stem Union / Reducer



Part #	
MTIGJ1/4-3/16	
MTIGJ1/4-5/32	
MTIGJ5/16-1/4	
MTIGJ3/8-1/4	
MTIGJ3/8-5/16	
MTIGJ1/2-3/8	
MTIGJ6-4	
MTIGJ8-6	
MTIGJ10-8	
MTIGJ12-10	
MTIGJ16-12	

Part #	
MTIGJ5/32-5/32	
MTIGJ3/16-3/16	
MTIGJ1/4-1/4	
MTIGJ5/16-5/16	
MTIGJ3/8-3/8	
MTIGJ1/2-1/2	
MTIGJ4-4	
MTIGJ6-6	
MTIGJ8-8	
MTIGJ10-10	
MTIGJ12-12	
MTIGJ16-16	

MettleAir Part Code Guide
[Click here for Page 3](#)

Plug-In Elbow



Part #	
MTLGJ1/8	
MTLGJ5/32	
MTLGJ3/16	
MTLGJ1/4	
MTLGJ5/16	
MTLGJ3/8	
MTLGJ1/2	
MTLGJ4	
MTLGJ6	
MTLGJ8	
MTLGJ10	
MTLGJ12	

Plug-In Y



Part #	
MTYGJ1/8	
MTYGJ5/32	
MTYGJ3/16	
MTYGJ1/4	
MTYGJ5/16	
MTYGJ3/8	
MTYGJ1/2	
MTYGJ4	
MTYGJ6	
MTYGJ8	
MTYGJ10	
MTYGJ12	

Plastic Plug



Part #	
MTPP1/8	
MTPP5/32	
MTPP3/16	
MTPP1/4	
MTPP5/16	
MTPP3/8	
MTPP1/2	
MTPP4	
MTPP6	
MTPP8	
MTPP10	
MTPP12	
MTPP14	
MTPP16	

Push Cap



Bulkhead Union



MettlerAir Part Code Guide
[Click here for Page 3](#)

Part #

MTCP1/8
MTCP5/32
MTCP1/4
MTCP5/16
MTCP3/16
MTCP3/8
MTCP1/2

MTCP4
MTCP6
MTCP8
MTCP10
MTCP12

Part #

MTM1/8
MTM5/32
MTM3/16
MTM1/4
MTM5/16
MTM3/8
MTM1/2

MTM4
MTM6
MTM8
MTM10
MTM12

90° Speed Control

Meter-Out*



MettlerAir Part Code Guide
Click here for Page 3

Part

MSC1/8-U10
MSC1/8-N01
MSC1/8-N02
MSC5/32-U10
MSC5/32-N01
MSC5/32-N02
MSC3/16-U10
MSC3/16-N01
MSC3/16-N02
MSC3/16-N02
MSC3/16-N03
MSC1/4-U10
MSC1/4-N01
MSC1/4-N02
MSC1/4-N03
MSC5/16-N01
MSC5/16-N02
MSC5/16-N03
MSC3/8-N01
MSC3/8-N02
MSC3/8-N03
MSC3/8-N04
MSC1/2-N02
MSC1/2-N03
MSC1/2-N04

Part

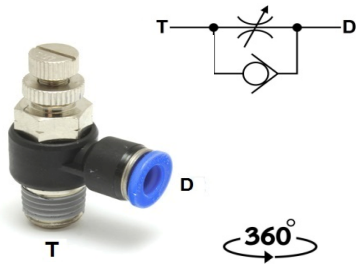
MSC1/8-G01
MSC1/8-G02
MSC5/32-G01
MSC5/32-G02
MSC3/16-G01
MSC3/16-G02
MSC1/4-G01
MSC1/4-G02
MSC1/4-G03
MSC5/16-G01
MSC5/16-G02
MSC5/16-G03
MSC3/8-G01
MSC3/8-G02
MSC3/8-G03
MSC3/8-G04
MSC1/2-G02
MSC1/2-G03
MSC1/2-G04

Part

MSC4-U10
MSC4-N01
MSC4-N02
MSC6-U10
MSC6-N01
MSC6-N02
MSC6-N03
MSC8-N01
MSC8-N02
MSC8-N03
MSC10-N01
MSC10-N02
MSC10-N03
MSC10-N04
MSC12-N02
MSC12-N03
MSC12-N04

*MSC Speed Controls can rotate for installation / adjustment purposes

90° Speed Control
Meter-Out*



90° Speed Control
Meter-In*



MettleAir Part Code Guide
Click here for Page 3

Part #

MSC4-M5
MSC4-M6
MSC4-01
MSC4-02
MSC4-03
MSC6-M5
MSC6-M6
MSC6-01
MSC6-02
MSC6-03
MSC8-01
MSC8-02
MSC8-03
MSC8-04
MSC10-01
MSC10-02
MSC10-03
MSC10-04
MSC12-01
MSC12-02
MSC12-03
MSC12-04

MSC4-G01
MSC4-G02
MSC6-G01
MSC6-G02
MSC6-G03
MSC8-G01
MSC8-G02
MSC8-G03
MSC10-G01
MSC10-G02
MSC10-G03
MSC10-G04
MSC12-G02
MSC12-G03
MSC12-G04

Part #

MSC-IN5/32-U10
MSC-IN5/32-N01
MSC-IN1/4-N01
MSC-IN1/4-N02
MSC-IN5/16-N02
MSC-IN5/16-N03
MSC-IN3/8-N02
MSC-IN3/8-N03
MSC-IN1/4-G01
MSC-IN1/4-G02
MSC-IN3/8-G02
MSC-IN3/8-G03

3D Speed Control Elbow
Meter-Out**



Part #

MSCL1/8-N01
MSCL1/8-N02
MSCL5/32-N01
MSCL5/32-N02
MSCL1/4-N01
MSCL1/4-N02
MSCL5/16-N01
MSCL5/16-N02
MSCL5/16-N03
MSCL3/8-N01
MSCL3/8-N02
MSCL3/8-N03
MSCL3/8-N04
MSCL1/2-N03
MSCL1/2-N04

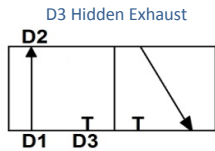
Part #

MSCL6-N01
MSCL6-N02
MSCL10-N02
MSCL10-N03
MSCL12-N03
MSCL12-N04
MSCL4-01
MSCL4-02
MSCL6-01
MSCL6-02
MSCL8-01
MSCL8-02
MSCL8-03
MSCL10-02
MSCL10-03

*MSC, MSC-IN Speed Controls can rotate for installation / adjustment purposes

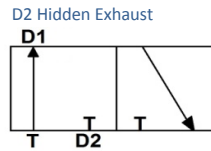
** MSCL Speed Control can be rotated vertically and horizontally

3 Way Hand Valve Union / Reducer



Part #	D1 - D2
MHVU5/32	5/32 - 5/32
MHVU1/4	1/4 - 1/4
MHVU5/16-1/4	5/16 - 1/4
MHVU5/16	5/16 - 5/16
MHVU3/8-5/16	3/8 - 5/16
MHVU3/8	3/8 - 3/8
MHVU1/2-3/8	1/2 - 3/8
MHVU1/2	1/2 - 1/2
MHVU4	4 - 4
MHVU6	6 - 6
MHVU8-6	8 - 6
MHVU8	8 - 8
MHVU10-8	10 - 8
MHVU10	10 - 10
MHVU12-10	12 - 10
MHVU12	12 - 12

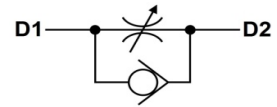
3 Way Hand Valve Male Connector*



Part #
MHVS1/4-N01
MHVS1/4-N02
MHVS5/16-N01
MHVS5/16-N02
MHVS3/8-N02
MHVS3/8-N03

MettleAir Part Code Guide
Click here for Page 3

Inline Speed Control

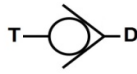
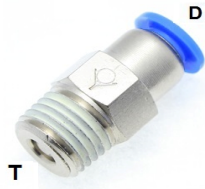


Part #
MSCA1/8
MSCA5/32
MSCA3/16
MSCA1/4
MSCA5/16
MSCA3/8
MSCA1/2

MSCA4
MSCA6
MSCA8
MSCA10
MSCA12

*MHVS Connectors can rotate for installation / adjustment purposes

**Check Valve
Male Connector**



Part #

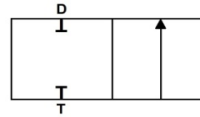
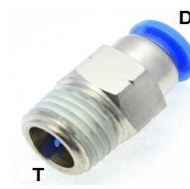
MCVC1/4-N01
MCVC1/4-N02
MCVC5/16-N01
MCVC5/16-N02
MCVC3/8-N02
MCVC3/8-N03

MCVC6-N01
MCVC6-N02

MCVC6-01
MCVC6-02

MCVC8-01
MCVC8-02

Male Stop Fitting



Part #

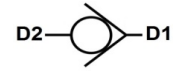
MTSC1/4-N01
MTSC1/4-N02
MTSC5/16-N02
MTSC3/8-N02
MTSC3/8-N03

MTSC6-N01
MTSC6-N02

MTSC6-01
MTSC6-02
MTSC8-02

MettleAir Part Code Guide
[Click here for Page 3](#)

Check Valve Union



Part #

MCVU5/32
MCVU1/4
MCVU5/16
MCVU3/8
MCVU1/2

MCVU4
MCVU6
MCVU8
MCVU10
MCVU12

MettleAir Part Code Guide
[Click here for Page 3](#)