

V&T SERIES

BOTTOM DUMP CONTROL VALVES

APPLICATION

V&T Series Valves can be used as a “Bottom dump” valve for hopper control on bottom dump trailers or railroad coal cars.

THE VERSA SOLUTION

- Standard “Bottom Dump” operation provides both 2 position solenoid control and 3 position manual control in one valve.
- ½” NPT full flow construction.
- Bubble-tight seals provide leak-free service for “creep-free” hopper control.
- The valve withstands impact with thick-walled forged brass construction.
- Prevents contamination from dirt and sand with VERSA proven dust proof option keeping solenoid and main valve free from clogging.
- Solenoid actuators utilize a “solenoid-pilot” design, with no coil burn-out due to valve hang-up.
- The main spring is an “air spring.” No mechanical spring to break or fail.
- Use of “solenoid-pilot” and “air spring” assure positive shift every time.
- Quick removal of valve with plug-in solenoid option.
- Standard ‘O’ ring seals make repair easy.
- Economical space saving “in line” version available.
- 100% factory tested at ISO 9001:2015 certified facility.



THE OPERATION

Mode One - Solenoid Application (2 position only)

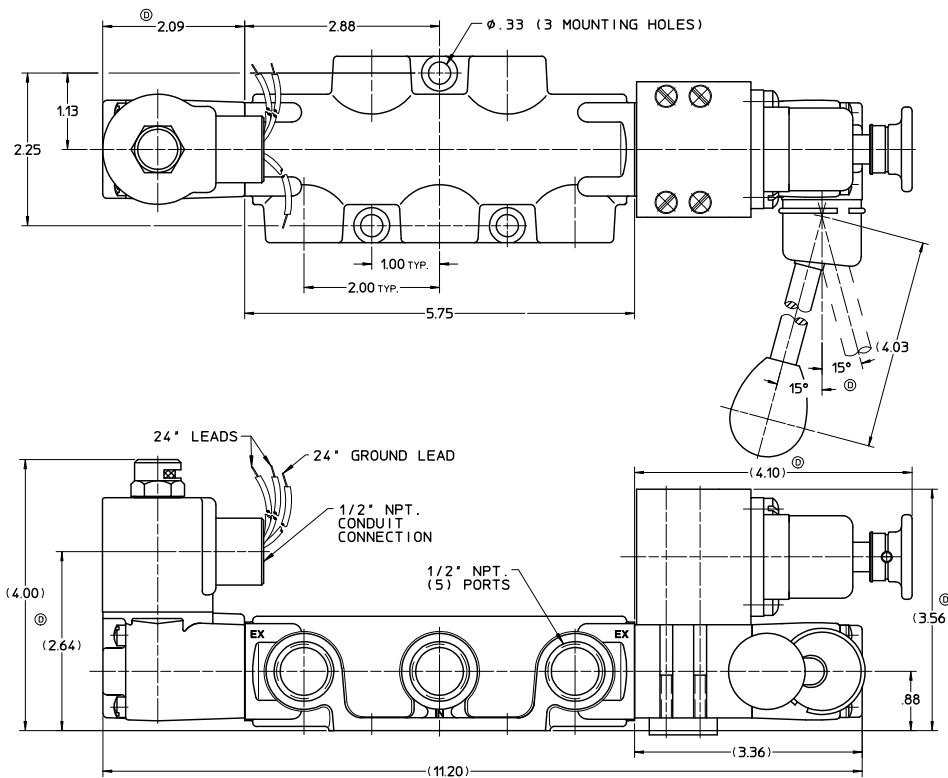
To pressurize port ‘B’ and exhaust port ‘A’, electrically energize the solenoid (the energized solenoid also pressurizes the air spring section of the valve). Maintained contact is required. To pressurize port ‘A’ and exhaust port ‘B’, de-energize the solenoid. The air spring will return the plunger (the air spring section will remain pressurized). The valve will remain in this position until the solenoid is either energized again or the valve is manually re-positioned.

Mode Two - Lever Application (2 or 3 position)

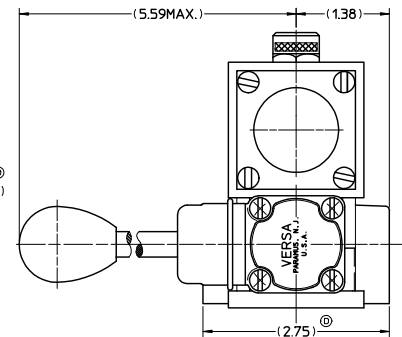
To manually operate this valve, the solenoid must be electrically de-energized. The air spring section de-pressurize by depressing the palm button (this button is spring-loaded and will reset itself). To pressurize port ‘B’ and exhaust port ‘A,’ move the hand lever toward the valve body. To pressurize port ‘A’ and exhaust port ‘B,’ move the hand lever away from the valve body. Move the lever midway between the two pressured positions noted above to block all valve ports. The valve will remain in any set of 3 positions until either the lever is manually re-positioned or the solenoid is energized.

GENERAL SPECIFICATIONS

Function:	4-Way, 2 and 3 position
Type:	Solenoid operated, air spring return, 2 position valve, or lever operated, 2 or 3 position valve
Media:	Air
Pressure:	40 to 175 psi
Flow C_v:	4.0
Voltage:	12 VDC
Power:	9.4 Watts
Duty:	Continuous duty coil
Connections:	1/2" NPT ports 1/2" NPT electrical conduit, solenoid leads are not polarity dependent
Materials:	Body: Brass Seals: Buna Coil: Epoxy molded Solenoid enclosure: Carbon steel, chromate coated



VGK-4523-20C-Volt



VERSA
22 Spring Valley Road
Paramus, New Jersey 07652, USA
Phone: 201-843-2400
Fax: 201-843-2931

VERSA BV
Prins Willem Alexanderlaan 1427
7321 GB Apeldoorn, Netherlands
Phone: +31-55-368-1900
Fax: +31-55-368-1909

Email: sales@versa-valves.com
Web: www.versa-valves.com

